

State of California  
AIR RESOURCES BOARD

EXECUTIVE ORDER D-251  
Relating to Exemptions Under Section 27156  
of the Vehicle Code

MAGNETIC ENVIRONMENTS  
MAGNE FUEL CHARGER DEVICE

WHEREAS, Vehicle Code Section 27156 and Title 13 California Code of Regulations (hereafter "CCR") Section 2222(e), authorize the California Air Resources Board (ARB) and its Executive Officer to exempt add-on and modified parts from the prohibitions of Vehicle Code Section 27156.

WHEREAS, Magnetic Environments has applied to the ARB for exemption from the prohibitions of Vehicle Code Section 27156 for the Magne Fuel Charger Device.

WHEREAS, pursuant to the authority vested in the Executive Officer by Health and Safety Code Section 39515 and in the Chief, Mobile Source Division by Health and Safety Code Section 39516 and Executive Order G-45-5, the Air Resources Board finds:

1. The Magne Fuel Charger is an add-on device that is attached to the fuel line in a motor vehicle.
2. The fuel line is part of the required motor vehicle pollution control system.
3. The Magne Fuel Charger is intended for use with a required pollution control system.
4. The Magne Fuel Charger by being installed on the fuel line alters the original design of a motor vehicle pollution control system.
5. The Magne Fuel Charger is a device subject to the prohibitions of Vehicle Code Section 27156 and an add-on part as defined by 13 CCR Section 1900(b)(1).
6. The Magne Fuel Charger does not reduce the effectiveness of any required motor vehicle pollution control device.
7. The Air Resources Board, in the exercise of technical judgement, is aware of no basis on which the Magne Fuel Charger will provide either a decrease in emission or an increase in fuel economy.
8. It has not been determined what effect use of the Magne Fuel Charger may have on any warranty, either expressed or implied, by the manufacturer of a motor vehicle on which the device is installed.

9. The Magne Fuel Charger is not a certified motor vehicle pollution control device pursuant to Health and Safety Code Section 43644.
10. The Air Resources Board by granting an exemption to Magnetic Environments for the Magne Fuel Charger does not recommend or endorse in any way the Magne Fuel Charger for emissions reduction, fuel economy, or any other purpose.

IT IS HEREBY RESOLVED that the Magne Fuel Charger is exempt from the prohibitions of Vehicle Code Section 27156 for installation on 1992 and earlier model-year vehicles powered with gasoline and diesel internal combustion engines subject to the following conditions:

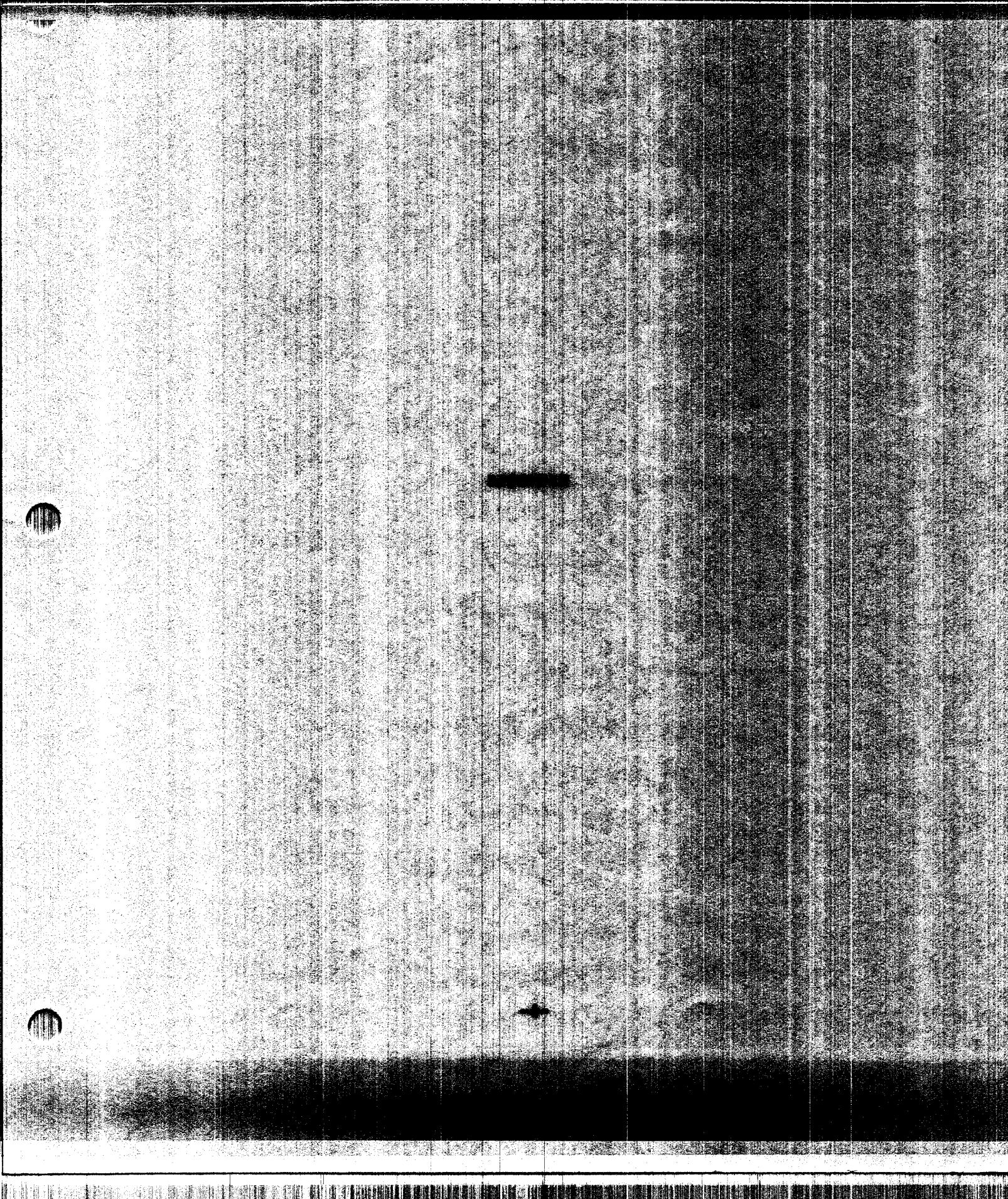
1. This exemption shall not apply to any device, apparatus, or mechanism advertised, offered for sale or sold with, or installed on, a motor vehicle prior to or concurrent with transfer to an ultimate purchaser.
2. No changes are permitted to the device as described in the application for exemption. Any changes to the device, applicable model year, or other factors addressed in this order must be evaluated and approved by the Air Resources Board prior to marketing in California.
3. Marketing of this device using an identification other than that shown in this Executive Order or marketing of this device for an application other than those listed in Executive Order shall be prohibited unless prior approval is obtained from the Air Resources Board. Exemption of this product shall not be construed as an exemption to sell, offer for sale, or advertise any component of the product as an individual device.
4. Any oral or written references to this Executive Order or its content by the Magnetic Environments, its principals, agents, employees, distributors, dealers, or other representatives must include the disclaimer that the Executive Order or the exemption it provides is not an endorsement or approval of any fuel economy or emissions reduction claims for the Magne Fuel Charger and is only a finding that the device is exempt from the prohibitions of Vehicle Code Section 27156.
5. No claim of any kind, such as "Approved by the Air Resources Board" may be made with respect to the action taken herein in any advertising or other oral or written communication.

Violation of any of the above conditions shall be grounds for revocation of this order. The order may be revoked only after a ten-day written notice of intention to revoke the order, in which period the holder of the order may request in writing a hearing to contest the proposed revocation. If a hearing is requested, it shall be held within ten days of receipt of the request and the order may not be revoked until a determination after hearing that grounds for revocation exist.

Executed at El Monte, California, this 21 day of April, 1992.



*for* R. B. Summerfield  
Assistant Division Chief  
Mobile Source Division



## INSTALLATION DIRECTIONS

## CARBURETED AND SINGLE POINT INJECTED ENGINES

1. LOCATE FUEL INLET ON THE CARBURATOR OR THE THROTTLE BODY. Do NOT CONFUSE THE RETURN LINE OR VAPOR LINE WITH THE INLET LINE. THIS MAY BE DONE BY LOCATING THE FUEL FILTER AND TRACING THE LINE OUT TO THE CARBURATOR OR THROTTLE BODY.
2. INSTALL THE MAGNA FUEL CHARGER AS CLOSE AS POSSIBLE TO THE INLET ON THE CARBURATOR OR THROTTLE BODY. CENTER THE FUEL LINE ACROSS THE CENTER OF THE UNIT. SELECT THE PROPER NYLON SELF-ADHERING CLIP, PEEL BACK THE PROTECTIVE PAPER AND PRESS CLIP FIRMLY ON METALLIC SIDE OF THE FUEL CHARGER.
3. INSTALL THE SAFETY STRAP WHICH IS ATTACHED TO THE BLACK COVER.

## MULTI-PORT FUEL INJECTED ENGINES

1. LOCATE THE FUEL LOG OR FUEL LINE THAT DISTRIBUTES THE FUEL TO THE INDIVIDUAL INJECTORS. Do NOT CONFUSE THE ELECTRONIC WIRES THAT OPERATE THE INJECTOR WITH THE FUEL FEED. LOCATE THE FUEL FILTER AND FOLLOW THE OUTLET TO THE INJECTOR LINE TO INSURE THAT YOU HAVE LOCATED THE HIGH PRESSURE SIDE OF THE SYSTEM.
2. INSTALL THE MAGNA FUEL CHARGER AT THE BEGINNING OF THE DISTRIBUTION TO THE INJECTORS. CENTER THE FUEL LINE ACROSS THE CENTER OF THE UNIT. SELECT THE PROPER NYLON SELF-ADHERING CLIP, PEEL BACK THE PROTECTIVE PAPER AND PRESS CLIP FIRMLY ON THE METALLIC SIDE OF THE FUEL CHARGER.
3. INSTALL THE SAFETY STRAP WHICH IS ATTACHED TO THE BLACK COVER.

## NOTE

BE CAREFUL NOT TO INSTALL THE MAGNA FUEL CHARGER ADJACENT TO ANY ELECTRONIC SENSORS.

